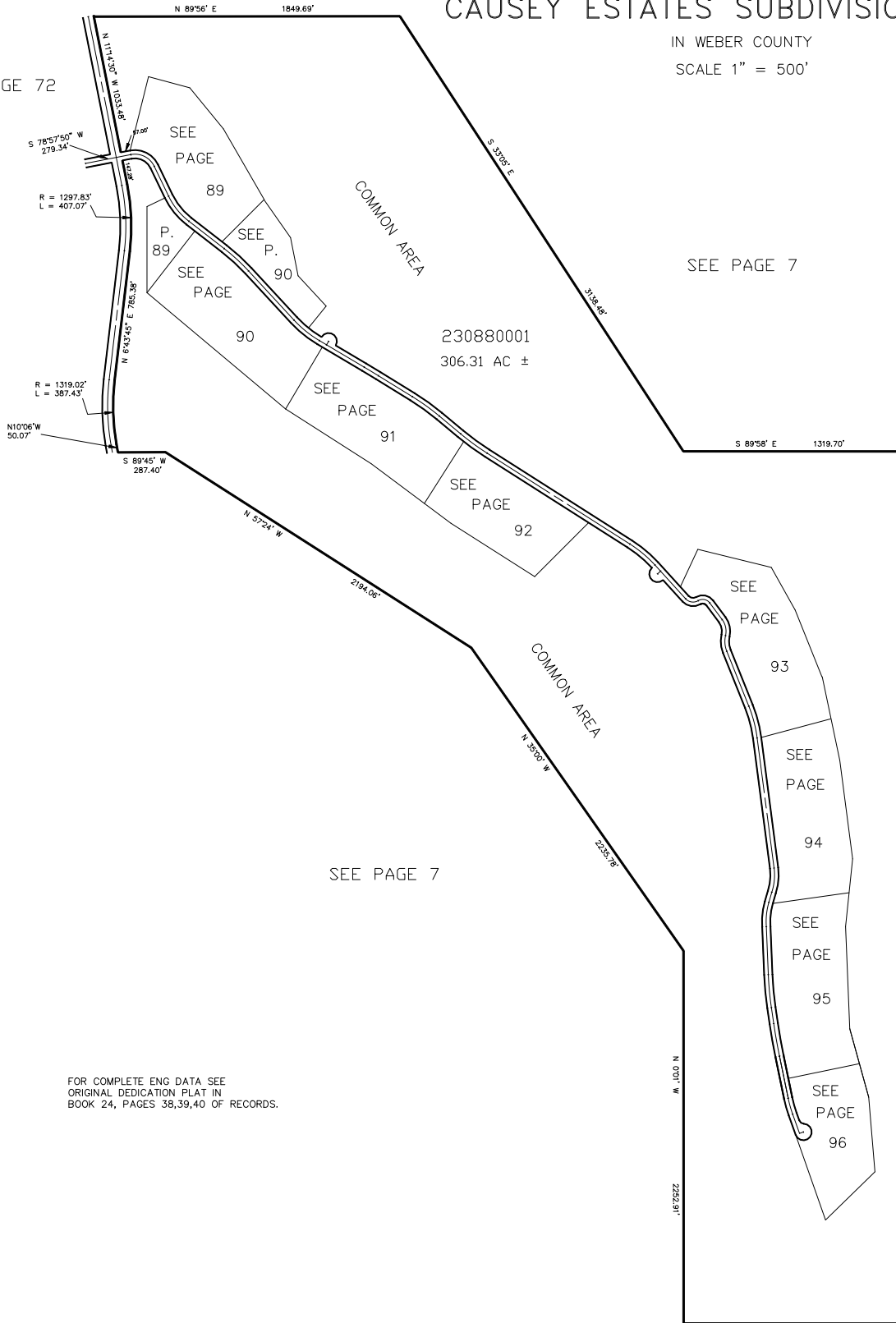


TAXING UNIT: 58

PART OF SECTIONS 11,12,13,14, T.6N., R.3E.XX., S.L.B. & M.  
**CAUSEY ESTATES SUBDIVISION NO. 3**

IN WEBER COUNTY  
SCALE 1" = 500'

SEE PAGE 72



SEE PAGE 7

230880001  
306.31 AC ±

SEE PAGE 7

SEE PAGE 7

FOR COMPLETE ENG DATA SEE  
ORIGINAL DEDICATION PLAT IN  
BOOK 24, PAGES 38,39,40 OF RECORDS.